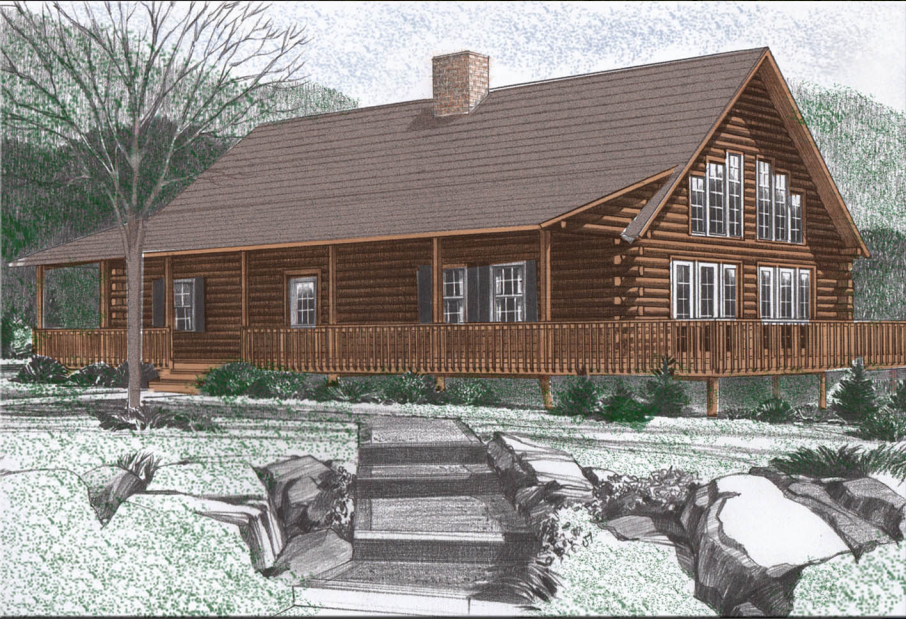




The Harborside



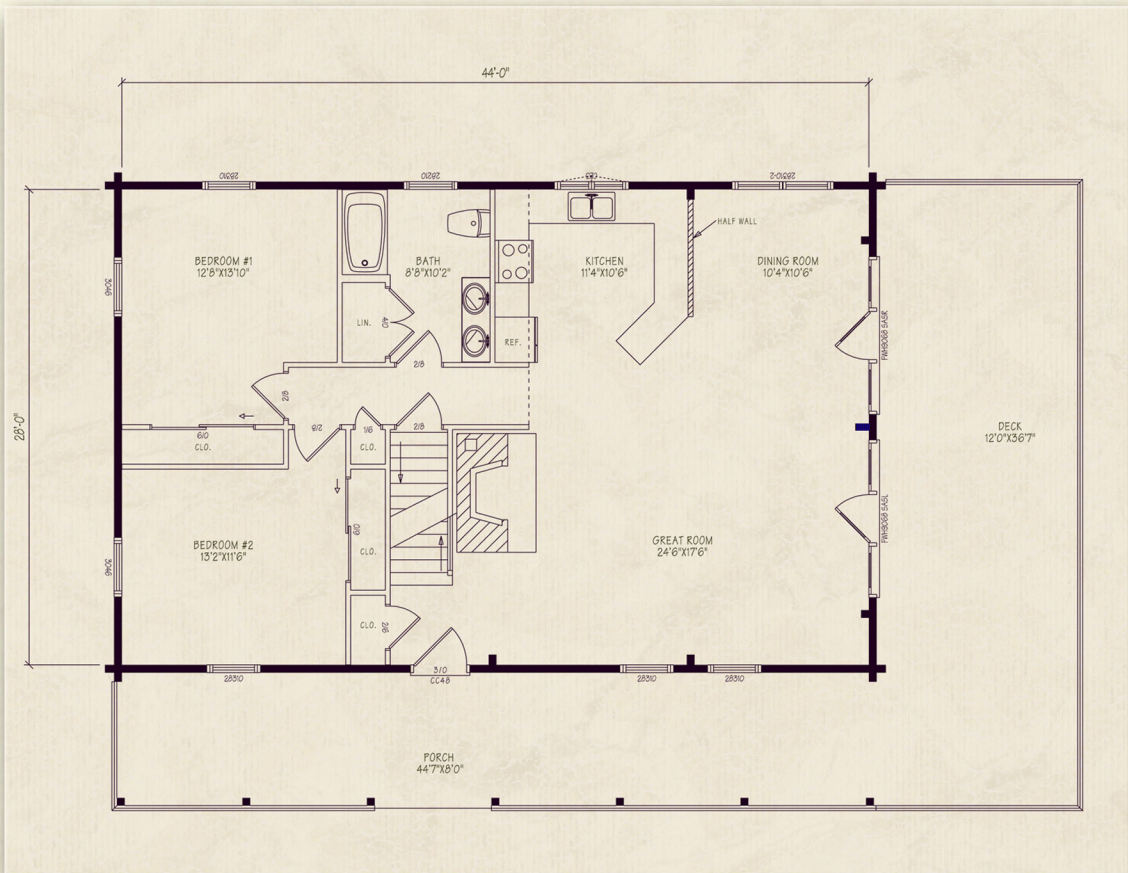
Northeastern Log Homes

info@northeasternlog.com 800-624-2797 www.northeasternlog.com

*Artist's rendering, photography and optional design ideas may vary from the standard model. Please always consult the standard floorplan and refer to the Premier Series material list as to what is included.



The Harborside



Premier Home Series

28' x 44' Size

1,896 Square Feet

Three Bedrooms

Two Baths

Price information available for download on our website

Optional Design Ideas:

Remove the partition between bedroom #1 and bedroom #2 to create a first floor master bedroom suite

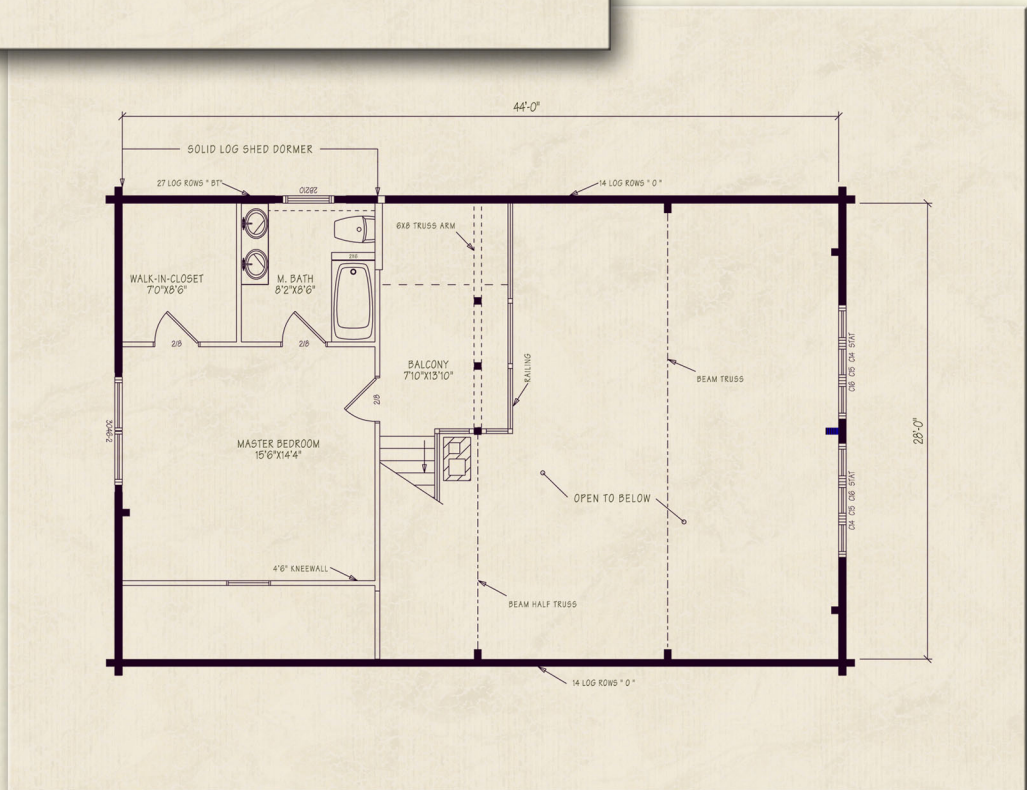
Extend the balcony over the kitchen for additional 2nd floor area.

Bring the shed dormer over the extended balcony to create a marvelous overlook of the downstairs

Swing the walk in closet door out into the master bedroom to create behind-the-door storage space. Shoe rack!

Extend the roof just a bit at the deck area for effect or a bit of shade for the upper windows when the summer sun is high

Remove the wall at the right of the kitchen counter to create a peninsula eating area



Northeastern Log Homes

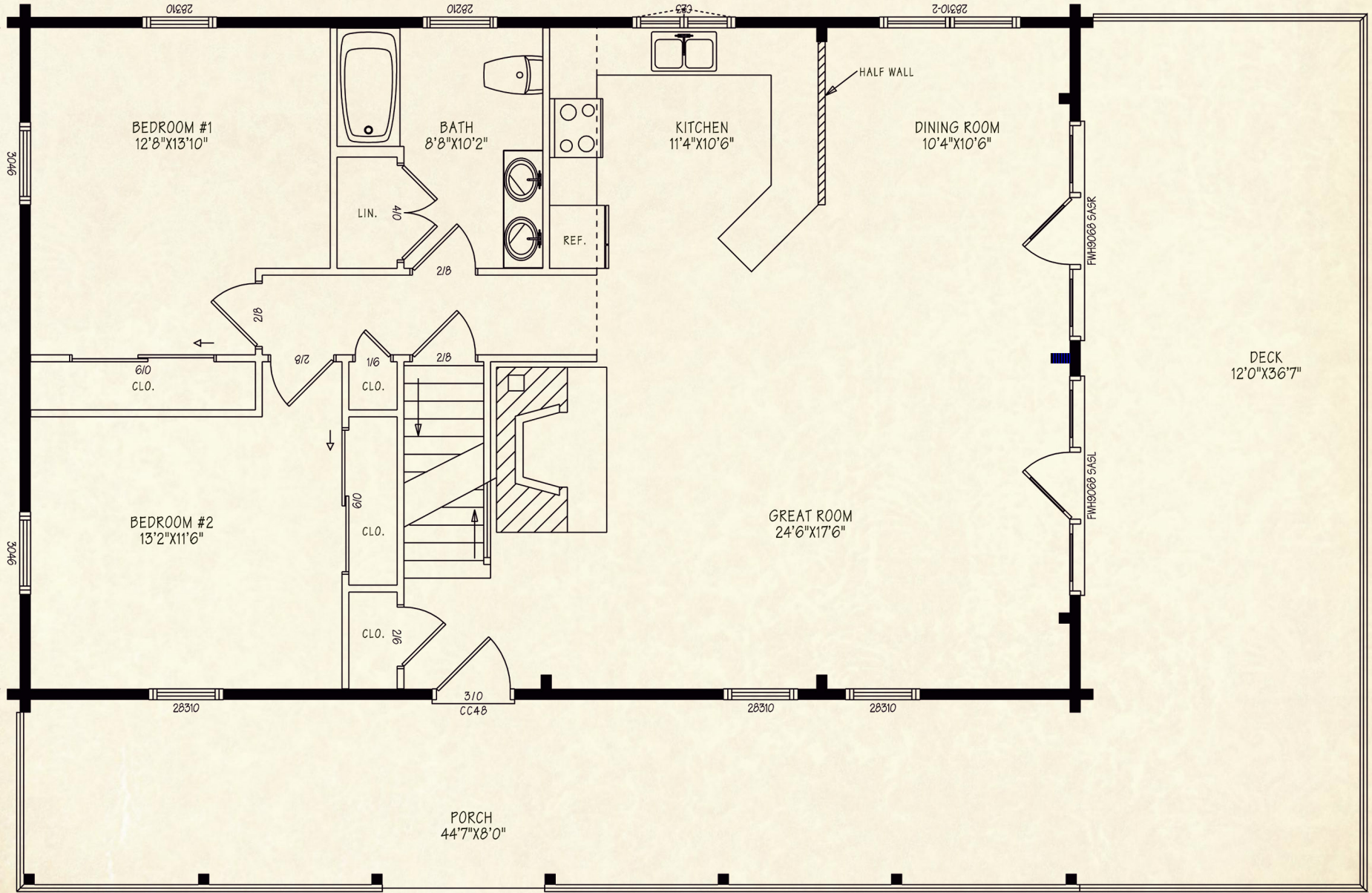
info@northeasternlog.com 800-624-2797 www.northeasternlog.com

The Harborside



44'-0"

28'-0"



The Harborside

